

# ALACARTE MENU



## Wakame salad

Japanese seaweed salad with freshly grounded based dressing

**Ksh 800/=**



## Gyoza

Pan fried dumpling with soy vinaigrette

**Ksh 700/=**



## Ebi Tempura

Deep fried prawns in Japanese flour with tempura sauce

**Ksh 1500/=**



## Gyoza (Steamed)

Steamed gyoza ( Normal size)

**Ksh 700/=**



## Karaage

Crispy bite sized Chicken Morsels

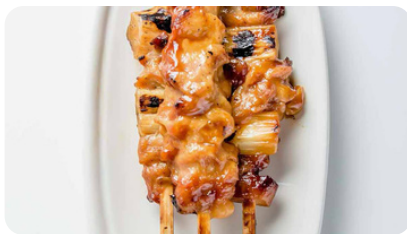
**Ksh 1000/=**



## Moriwase Tempura

Deep fried flour coated mixed seafood and vegetables with Tempura

**Ksh1200/=**



## Chicken Skewers

Grilled chicken on skewers with teriyaki sauce

**Ksh 1200/=**



## Yasai Itame

Seasonal vegetables stir-fried with sake and soy sauce

**Ksh 700/=**



## Yasai Tempura

mixed vegetable tempura

**Ksh800/=**



## Buta Bara

Grilled Pork with Teriyaki Sauce

**Ksh1000/=**



## Grilled Squid

Fresh grilled squid-big size

**Ksh 1500/=**



## Agedashi Tofu

Deep fried bean curd in tempura sauce

**Ksh 800/=**

# NOODLES MENU



## Tempura Udon

Thick white noodles mixed with tempura in hot soup

**Ksh 1500/=**



## Kimchi Nabeyaki Udon

Thick white noodles with kimchi mixed with tempura and egg

**Ksh 1500/=**



## Nabeyaki Udon

Thick white noodles mixed with tempura in hot soup

**Ksh1500/=**



## Zaru Soba

Cold Noodles with soba sauce

**Ksh1200/=**



## Yaki Udon

Pan fried thick noodles with seafood and vegetables

**Ksh 1500/=**



## Curry udon

Noodles soup with pork meat cooked with curry powder

**Ksh 1500/=**

# MAIN COUSE

SERVED WITH MISO SOUP  
AND RICE



## Yakiniku (Beef Fillet)

Grilled thin sliced beef with  
teriyaki suace

**Ksh 1500/=**



## Katsu Curry(Pork)

Breaded pork with traditional  
curry powder

**Ksh 1500/=**



## Shogayki Tieshoku(Pork)

Pan fried thin sliced pork with  
ginger sauce

**Ksh 1500/=**



## Shake Teriyaki(Salmon)

Grilled Norwegian salmon with  
teriyaki sauce

**Ksh 3000/=**



## Tonkastu(Pork Breaded)

Breaded pork fillet with  
miso sauce

**Ksh 1500/=**



## Chicken Teriyaki

Grilled chicken breast with  
teriyaki sauce

**Ksh 1500/=**



# DON MENU

Served with miso soup



## Kastudon

Deep fried breaded pork, onion and egg on steamed rice

Ksh 1500/=



## Tendon

Mixed tempura on steamed rice

Ksh 1500/=



## Unagi Don

Eel on steamed rice with sweet sauce

Ksh 1500/=



## OyakoDon

Mixed chicken slices, onion and egg on steamed rice

Ksh 1500/=



## Gyudon

Thin slices of beef loin and onion on steamed rice

Ksh 1500/=



## Shogayaki Don

Thin sliced pork meat with ginger sauce on steamed rice

Ksh 1500/=



## Fried Rice

Stir-fried rice with vegetables and egg

Ksh 600/=



## Steamed Rice

Plain steamed rice

Ksh 200/=



# SUSHI AND SASHIMI MENU



**Prawns Sushi(2pcs)**  
**Ksh 400/=**



**Eel Sushi(2pcs)**  
**Ksh 700/=**



**Squid Sushi(2pcs)**  
**Ksh 400/=**



**Egg Sushi(2pcs)**  
**Ksh 300/=**



**Crabstick Sushi(2pcs)**  
**Ksh 400/=**



**Tuna sushi (2pcs)**  
**Ksh 400/=**



**Salmon Sushi(2pcs)**  
**Ksh 1000/=**



**Avocado Sushi(2pcs)**  
**Ksh 200/=**



**Octopus Sushi (2pcs)**  
**Ksh 400/=**



**Tobiko Sushi(2pcs)**  
**Ksh 1000/=**



**Tuna and Salmon  
Sushi roll set(16pcs)**  
**Ksh 4000/=**



**Squid Sashimi**  
**Ksh 500/=**



**Tobiko Sushi**  
**Ksh 1000/=**



**Tuna Sashimi**  
**Ksh 900/=**



**Octopus Sashimi**  
**Ksh 500/=**



**Egg Sashimi**  
**Ksh 500/=**



**Crabstick Sashimi**  
**Ksh 500/=**



**Salmon and Tuna Sashimi  
set(12pcs)**  
**Ksh 3200/=**



**Tobiko Sashimi 1pc**  
**Ksh 1200/=**



**Salmon Sashimi**  
**Ksh 2000/=**

## MAKI AND TEMAKI MENU



**Salmon Maki**

**Ksh 1200/=**



**Tuna Maki**

**Ksh 800/=**



**Avocado Maki**

**Ksh 600/=**



**Cucumber Maki**

**Ksh 600/=**



**Crabstick Maki**

**Ksh 700/=**



**Unagi Maki**

**Ksh 700/=**

## TEMAKI MENU



**Salmon & Avocado Temaki**

**Ksh 1600/=**



**Spicy Salmon Temaki**

**Ksh 1600/=**



**Salmon Temaki**

**Ksh 1600/=**



**Spicy Tuna Temaki**

**Ksh 800/=**



**Tuna Temaki**

**Ksh 800/=**



**Carlifonia Temaki**

**Ksh 700/=**



**Eel and Cucumber Temaki**

**Ksh 800/=**

# Sushi Rolls Menu

**Crazy crunch Roll**..... Ksh 1000/=

Cucumber , avocado crabstick and crunchy

**Executive Maki Roll** .....Ksh 1200/=

Breaded tiger prawns , flyingfish egg, avocado tuna & Eel

**Boston Roll** .....Ksh 2000/=

Tuna, salmon with teriyaki sauce

**Rainbow Roll** ..... Ksh 2000/=

Crabstick, avocado,tuna and Salmon



**Dynamite Futo Maki**..... Ksh 1200/=

Prawns tempura, cucumber, avocado chill and spicy mayonnaise

**Beef Roll (Gyumaki)** ..... Ksh 1200/=

Beef fillet , vegetables and teriyaki sauce

**Tonkatsu Roll** .....Ksh 1200/=

Fried pork, lettuce and teriyaki sauce

**Sausage and Cheese Roll** .....Ksh 1200/=

Beef sausages, cheese and cucumber

**Summer Roll** ..... Ksh 1200/=

Beef or chicken, ,teriyaki sauce lettuce and mayonnaise

**Crunch Caltonia Roll** ..... Ksh 1000/=

Cucumber . avocado, crabstick and flying fish egg

**Spicy Crunchy Roll** ..... Ksh 2000/=

Chopped salmon with Japanese spicy sauce

**Teriyaki Roll**.....Ksh 1200/=

Beef or chicken teriyaki, cream cheese and vegetables

## Vegetarian Rolls



**Veg Tempura Roll**..... Ksh800/=

Cucucmber, avocado, carbstick and crunchy

**Veg Dynamite Roll**.....Ksh1000/=

Vegetable tempuram, and chilly

**Crispy Spicy Veg Roll**..... Ksh800/=

Asparagus, cucumber, avocado and spicy sauce

**Crazy Veg Roll**..... Ksh800/=

Cucumber, avocado and vegetable spicy roll

**Spicy Carrot and Avocado Roll**..... Ksh800/=

Avocado, carrot with spicy sauce



# Sushi Platters Menu

Party Platter 50pcs.....Ksh9000/=



Group Platter (42pcs).....Ksh7900/=

Family Platter(32pcs).....Ksh7000/=



Sushi Lovers Platter (21pcs)----Ksh 6000/=

Couple Platter(15pcs)..... Ksh4500/=

Soo Sushi Platter (13pcs)..... Ksh4000/=

Soo vegetarian Platter(24pcs)..... Ksh3500/=



# Korean Special Menu



**Budae Jjigae(Army Hot Soup)**

kimchi, ham, sausages, vetables etc(3portions)

**Ksh 5500/=**



**Spicy Chicken(Dakhbokum)**

Spicy chicken soup

**Ksh 3500/=**



**Topoky(Tteokbokki)**

Korean Spicy rice cake

**Ksh 900/=**



**Black bean Noodles (Jajamyon)**

Pork and vegetables

**Ksh 1500/=**



**Yukjang(soup)**

Spicy beef and vegetable soup

**Ksh 1500/=**



**Soundae Soup**

mixing pork blood with cellophane noodle

**Ksh 1500/=**



**Bibim-Bap**

Rice, minced meat and egg in hot pot Glass noodles and vegetables with meat

**Ksh 1500/=**



**Jabchae**

**Ksh 1200/=**



**Jjampong(Champong)**

Spicy seafood soup with noodles

**Ksh 1800/=**



**Odeng Tang**

Fish cake soup with black mushroom

**Ksh 1500/=**



**Kimchi Jjiage**

Kimchi with pork belly and korean chilly sauce

**Ksh 1500/=**



**Haemultang**

Exotic mixed seafood in soup, vegetables and korean spicy sauce

**Ksh 5500/=**



**Seollung-Tang**

Long time boiled Beef bone soup with radish kimchi

**Ksh 1500/=**



**Squid Bhokum**

Pan fried squid with spicy sauce and vegetables

**Ksh 2000/=**



**Jijimi(Korean pancake)**

Korean pancake with mixed seafood, egg and vegetables

**Ksh 1500/=**



# Korean Special Menu



## Jeyuk-Bhokum

Pan fried pork and kimchi served with steamed rice

**Ksh 1500/=**



## Nengmyun

Korean nengmyun noodles with cucumber, and boiled egg on top

**Ksh 1500/=**



## Hye-dup-Bap

Rice on bowl with mixed seafood and vegetables

**Ksh 1500/=**



## Korean Fried Chicken

Option for sauced or without sauce

**Ksh 2500/=(Full)/Ksh 1500/=(Half)**



## Korean Ramen

Ramen noodles in soup with saefood or meat

**Ksh 1500/=**

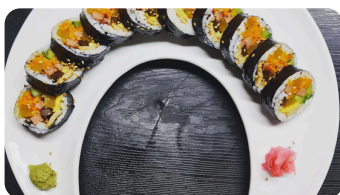
**(veg Ramen Ksh800/=)**



## Bulgogi

Thin sliced beef fillet with rice

**Ksh 1500/=**



## KimBap

Korean Roll with vegetables and ham

**Ksh 700/=**



## Sweet and Sour pork

**Ksh 1500/=**



## Teonjan Jjigae

**Ksh 1500/=**



# Lunchbox Menu



## Executive Lunchbox

Gyoza, Prawns, beef fillet, yasai itame and salmon steak

**ksh3500/=**

*Executive Lunchbox  
With chicken Katsu  
(Instead of Salmon Steak)*

**ksh1800/=**



## Soo Lunchbox

Chicken tempura, tofu, yakiniku yasai itame and salmon steak

**ksh 3000/=**

*Soo Lunchbox With Buta Fillet  
(Instead of Salmon Steak)*

**ksh1500/=**



## vegeterian Lunchbox

Vegetables , tofu, sald and veg rolls

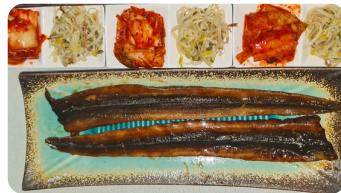
**ksh 1500/=**

# Korean BBQ Menu



## Marrinated Beef Kalbi

**ksh 2000/=**



## Marrinated Eel BBQ

**ksh 1800/=**



## Porkbelly BBQ

**ksh 1800/=**



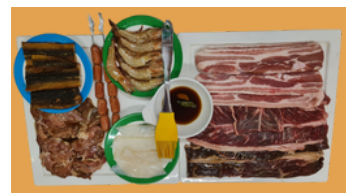
## Chicken BBQ

**ksh 1500/=**



## Fresh Beef BBQ

**ksh 1800/=**



## Mixed Family Set BBQ

Beef, Pork, Chicken, Lamb, Seafood and Sausages

**Ksh 8000/=**



## Mixed Skewers 10 Set

Beef, Chicken, Lamb Vegetables and Sausages

**Ksh 5500-/=**